



SIPABOARDS

v2.1

Instruction Manual

Sipaboards, d.o.o.

Fužine 100,
1241 Kamnik,
Slovenia

Web: www.sipaboards.com
Mail: info@sipaboards.com
Tel. 00386 51 494 929

Table of contents

Safety warning	6
A word of caution	8
Unpacking & Assembly	10
SipaDrive	12
Batteries & Charging	13
Preparation & Inflation	16
Step by Step preparation guide	17
Compressor	19
Fin assembly	21
Paddle & Remote control	22
Drive operation	23
Packing up	24
Battery charge indicators	25
Troubleshooting	27
Repair kit & Repairs	29
Warranty & Liability	30
Useful links	31
Serial number & Registration	32

ELECTRIC EXPLORATION AWAITS

The future of paddleboarding is here. Get ready to ride the wave of electrifying experiences with SipaBoards e-SUPs.

Our e-SUPs have garnered a devoted following of satisfied users who value the combination of innovation, performance, and safety. As more paddlers embrace electric SUPs, the sport enters a new era of excitement, exploration, and connection with nature. SipaBoards' electric-driven and self-inflating SUPs are revolutionizing stand-up paddleboarding. By incorporating advanced technology and prioritizing safety, we enable paddlers to experience further, faster, and safer adventures on the water.

Congratulations on being the proud owner of a new SipaBoard and welcome to the family.

First, a word of appreciation: clearly you have great taste in design and functionality and are an avid watersports fan, so we would like to thank you for purchasing a SipaBoard. This manual has all the information you'll need to keep a SipaBoard in good working condition, to paddle safely, and to manage all the features that set SipaBoards apart from other SUPs, namely self-inflation, operating the electric controls, and properly charging and storing the batteries.

⚠ SAFETY WARNINGS and PRECAUTIONS

Please read this Owner's Instruction Manual in its entirety before using this product and pay special attention to items that include any of the following terms: CAUTION, WARNING, DANGER, IMPORTANT, NOTICE, ONLY, MUST, ALWAYS, DO NOT, and NEVER. **IT IS NECESSARY** to read this manual and understand iNECESSARY

- SAFETY WARNING -

PADDLEBOARDING CAN BE VERY DANGEROUS AND REQUIRES INTENSE PHYSICAL EFFORT. THE USER OF THIS PRODUCT MUST BE AWARE THAT PADDLEBOARDING ACTIVITIES MAY RESULT IN SERIOUS INJURY OR DEATH. CAREFULLY FOLLOW THESE SAFETY STANDARDS WHENEVER USING THIS PRODUCT.

- ALWAYS wear a nationally approved personal floatation device (PFD).
- ALWAYS wear the ankle leash provided.
- ALWAYS wear a helmet when appropriate.
- Dress appropriately for weather conditions; exposure to cold weather and cold water can result in hypothermia.
- Check all your equipment for signs of wear, tear, damage or malfunction before each use.
- Be aware of the natural elements that could impact your activity, such as weather condition and possible weather changes, water levels, tides, currents and wind.
- DO NOT use this product on open or white waters. Use it only on calm water.
- Use this product ONLY in areas that are considered appropriate for paddleboarding activities; make yourself familiar with the area before starting your activity.
- DO NOT use this product in flood conditions.
- NEVER paddle alone.
- DO NOT exceed your own abilities and experience level. Inexperienced paddleboarders should obtain appropriate paddleboarding training before using this product.
- Consult a physician regarding your physical fitness for the activity you intend to undertake.
- DO NOT tow from any other vehicle or boat. DO NOT tow any other vehicle, boat, or device.
- DO NOT use this product under the influence of alcohol or drugs.
- DO NOT allow children to operate the product without adult supervision.
- ALWAYS comply with all local water safety rules and applicable laws and regulations.

IT IS NECESSARY to read this manual and understand its content before you head out for your first paddling session with a SipaBoard, as inside you will find all you need to know about safety, performance, maintenance, and service. Continue to refer to this manual as you enjoy your SipaBoard.

⚠WARNING By using this product you agree to accept the risks involved with paddleboarding activity and agree to follow all instructions, cautions, and warnings carefully at all times while using SipaBoards' products.

⚠WARNING It is the owner's responsibility to read and understand the this Instruction Manual and to instruct all other users in the safe operation of this product. By using this product you hereby agree to the Release of Liability and Claim Waiver Agreement in this manual.

If anything is unclear or if you have any further questions, DO NOT hesitate to contact us at info@sipaboards.com. Your safety and enjoyment are our first concern. Wishing you calm waters.

A WORD OF CAUTION

Any athletic activity comes with a certain amount of personal risk, including but not limited to damage to person and property and in the most unfortunate incidents even death. Paddleboarding is no exception, with risks including, but not limited to, collisions with other paddlers, swimmers, marine wildlife, and natural or man-made objects. Fatigue and fast-changing weather conditions MUST also be taken into consideration. Appropriate safety equipment - including a life jacket and an ankle leash - thorough knowledge of water safety, responsible paddleboarding, and proper use and maintenance of your SipaBoard can go a long way towards mitigating these risks.

SipaBoards are not intended for dirty, polluted waters, nor ones with excessive vegetation, including algae, water lilies, grasses, branches, etc. Verifying the suitability of the water is your responsibility, and disregard of such circumstances that may impair the normal use of the product will **void the product's warranty**.

Before using any SipaBoard it is your responsibility to determine what the maritime laws are in the area where you are paddling. Every country has its own rules and laws and it is up to you to determine what those are and to respect them.

Any sport on the water depends on natural factors. Always check the weather report before heading out, as well as tides, currents, and the presence of hard or sharp objects under the water's surface or on the shore, where you start your journey and come back from the water.

Safety equipment - an ankle leash and a lifejacket - MUST be worn at all times when you are on a SUP. In many countries/waters this is actually required by law (and trends predict the spreading of this legal requirement).

⚠WARNING DO NOT exceed the Maximum Weight Capacity of the SipaBoard (Max. Weight). The recommended capacity of this product is 203/105 kg, while maximum capacity is 350lbs/160kg. Exceeding this weight may damage the product and make it dangerous for your safety .

Anyone under 18 should ONLY use a SipaBoard with a parent's permission and the supervision of an adult.

⚠WARNING The ability to swim is a NECESSARY skill for anyone who intends to use a SUP as you may risk drowning. If you cannot swim comfortably YOU MUST NOT use a SipaBoard. NEVER use a SipaBoard under the influence of alcohol or other substances.

⚠WARNING Please note that the battery charge level indicator is ONLY intended to provide the user with a general understanding of remaining battery charge available. Users MUST ONLY use the SipaBoard to cover distances that the user is comfortable reaching, and returning from, under physical paddle power ONLY, in the event of battery depletion or other failure of the system.

If you DO NOT agree with these provisions or are unwilling to take responsibility for verifying weather conditions and using appropriate safety equipment, or if you DO NOT know how to swim, then DO NOT use SipaBoards' products.

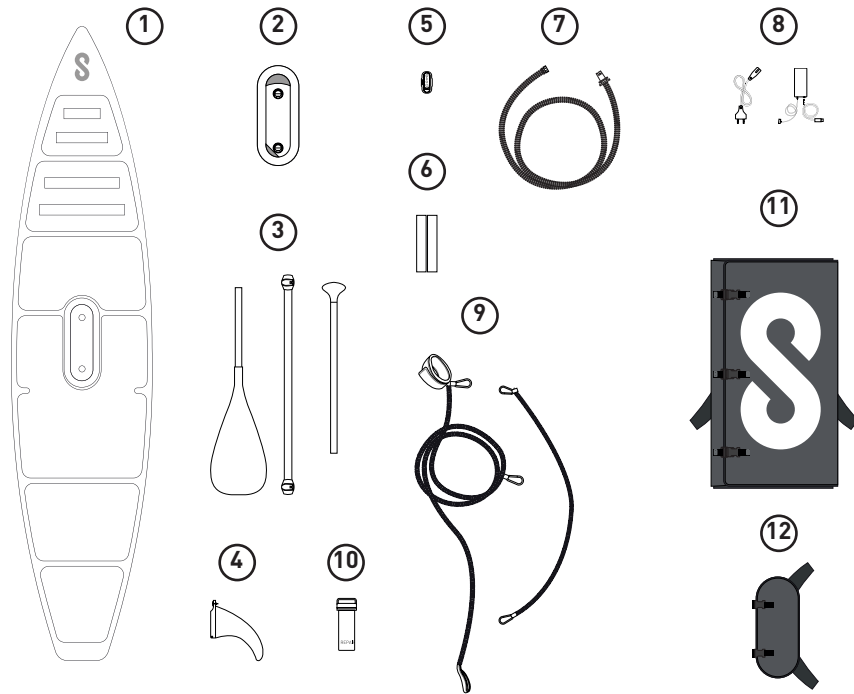
As the range of factors and the number of possible circumstances that could occur on the water is impossible to anticipate, by purchasing and/or using a SipaBoard you are assuming such risks and indemnifying SipaBoards of any liability for damage to person or property to the greatest extent permitted by law.

Unpacking and Assembly

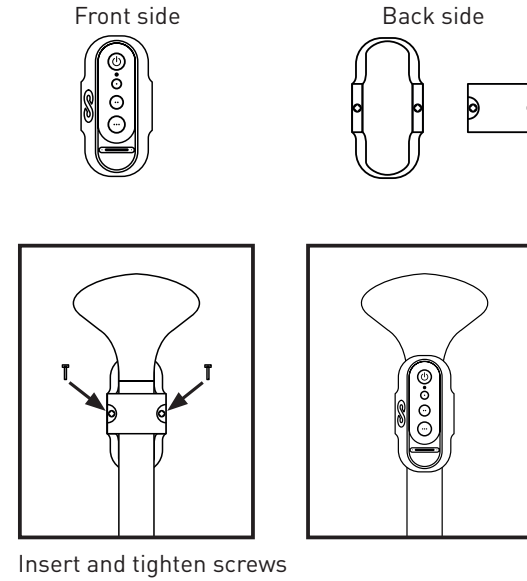
Open the SipaBoard packaging carefully (DO NOT use sharp objects so as not to puncture the SUP) and ensure all the components are included.

Immediately upon opening the box your SipaBoard comes in, verify that it includes all the parts/components:

- | | |
|---|-----------------------|
| ① SipaBoard inflatable SUP | ⑦ Inflation hose |
| ② SipaDrive, motor and compressor unit* | ⑧ Charger and cable** |
| ③ Collapsible paddle | ⑨ Safety leash |
| ④ Fin | ⑩ Carry strap |
| ⑤ Remote control ring | ⑪ Repair kit |
| ⑥ Battery pack | ⑫ Drive bag |



Now assemble the already charged remote control as indicated in the picture. Attach it to the paddle. (see picture)



CAUTION: DO NOT strip the thread on the screws when attaching the remote control to the paddle. Use the included tools (hex-key).

* All SipaDrive units are equipped with LED lights.

**The charger comes packed along with your SipaBoard, but DO NOT take it with you when you go out on the water. Leave it at home, in your car, or on your boat.

SIPADRIVE

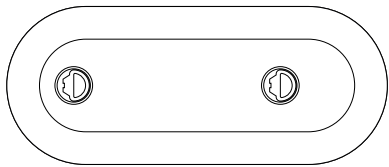
The SipaDrive is what sets SipaBoards apart from any competitor. It is an integrated combination of compressor with inflation hose and motor with propeller. This is located in a plastic housing with an affixing cover and a protective mesh on the bottom.

The SipaDrive may ONLY be opened when both the SipaDrive and SipaBoard are dry and resting on a soft, flat surface. IF WATER GETS INTO THE INSIDE OF THE SIPADRIVE, YOUR WARRANTY IS VOIDED.

⚠WARNING Opening the SipaDrive's cover while the SipaBoard is on the water is strictly prohibited, as it can be dangerous to your safety, and immediately voids your warranty.

⚠WARNING Using the SipaDrive without the protective mesh cover on the bottom is strictly prohibited. Using the SipaDrive without the protective mesh being properly installed can cause injury to you and damage to the product. Not following this instruction and warning will immediately void the warranty.

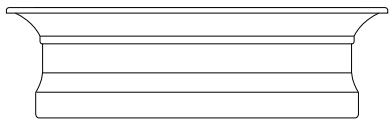
SipaDrive top view



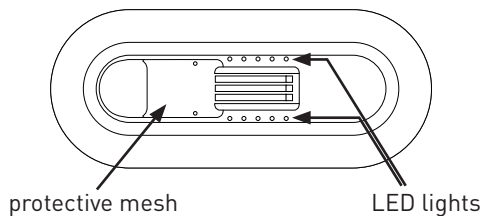
SipaDrive cover



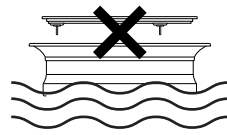
SipaDrive side view



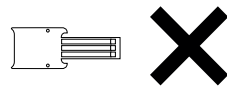
SipaDrive bottom view



DO NOT OPEN IF WET!



DO NOT OPEN WHILE ON WATER!



DO NOT REMOVE PROTECTIVE MESH!

BATTERIES

The batteries will arrive with 30% charged, so before use it MUST be charged using the included charger according to the directions included. SEE: CHARGING BATTERY
The battery can be transported in the SipaDrive housing, as long as the main switch in SipaDrive is OFF.

⚠WARNING During transport and storage the battery MUST NEVER be exposed to temperatures above 120 °F (50 °C), as this will reduce the battery's lifespan and it may damage it permanently. DO NOT LEAVE the BATTERY IN YOUR VEHICLE ON A SUNNY DAY!

⚠WARNING DO NOT transport the chargers together with wet components.

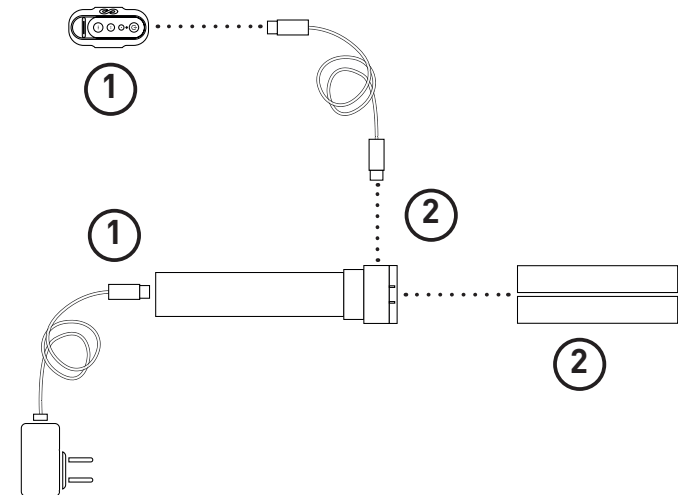
CHARGING THE [SIPADRIVE] BATTERY

You will need to charge two sets of batteries to start using the SipaBoard: 1) the battery in the remote control ring, and 2) the batteries for the SipaDrive.

- 1) Use the USB charging cable to charge the battery in the remote control
- 2) Use the designated charger for the SipaDrive battery.

NOTE: The XX volt charger is suitable for power outlet voltage ranges of 110 VAC to 240 VAC (therefore universal, and compensates for differences in voltage automatically).

⚠WARNING You MUST be physically present while the battery is charging. DO NOT leave a charging battery unattended. Disconnect power immediately if battery overheats or other signs of failure occur, including if the battery emits an unusual smell, feels hot, changes color or shape, or appears abnormal in any other way.



Charge the battery with the included charger in a completely dry environment. Make sure the battery is completely dry when charging.

Attach the battery to the charger, and plug it into an electrical outlet/socket. The order you connect them with the charger is not important. Charging will start immediately. The two-color LED shows you the status:

- red: charging
- green: charging completed

⚠WARNING If the LED is blinking, there was an error and you MUST stop charging immediately (disconnect). The cause could be a battery failure (too drained, too moist, overheated) or an issue with the connector or cables.

Charging is automatic. The battery normally will reach a full charge in little over 1 hour for the 90 Wh battery and a little over 2 hours for the 180 Wh battery. However, charging time may vary based on battery level at the beginning of the charge. Once the battery is charged disconnect it from the charger.

CHARGING THE REMOTE CONTROL'S BATTERY

Also charge the remote control's battery with the included charger in a completely dry environment. Use the included USB cable to charge the remote control's battery. Make sure the remote control is completely dry. The charger has a 5V USB socket. The charging cable's other end has a magnetic connector, which you plug into the remote control. The remote control will light up.

- red: charging
- green: charging completed

If the LED does not light up in a few seconds, turn the magnetic connector around and connect it in the opposite position.

Charging is automatic. When the remote is fully charged, disconnect the cable.

The SipaDrive battery and remote control batteries can be charged at the same time. It is recommended that you charge the remote control's battery after every session, just like the SipaDrive battery.

⚠WARNINGS

- Before charging, read all instructions and warnings.
- Before charging, make sure all the components are dry, clean, and undamaged.
 - DO NOT charge the batteries if they appear in any way damaged!
- Only charge in a dry environment at room temperature
- DO NOT charge near flammable or volatile substances
- DO NOT cover the battery, remote control, or charger with any material while charging.
- You MUST be present during charging so you can monitor the charging process.
- DO NOT leave the battery or remote control connected to the charger after charging is complete.
- DO NOT let minors charge the batteries.
- Use ONLY the original, included cables and charger for charging the SipaDrive and remote control.
- If something goes wrong with charging, immediately stop the process.

GETTING READY FOR THE RIDE

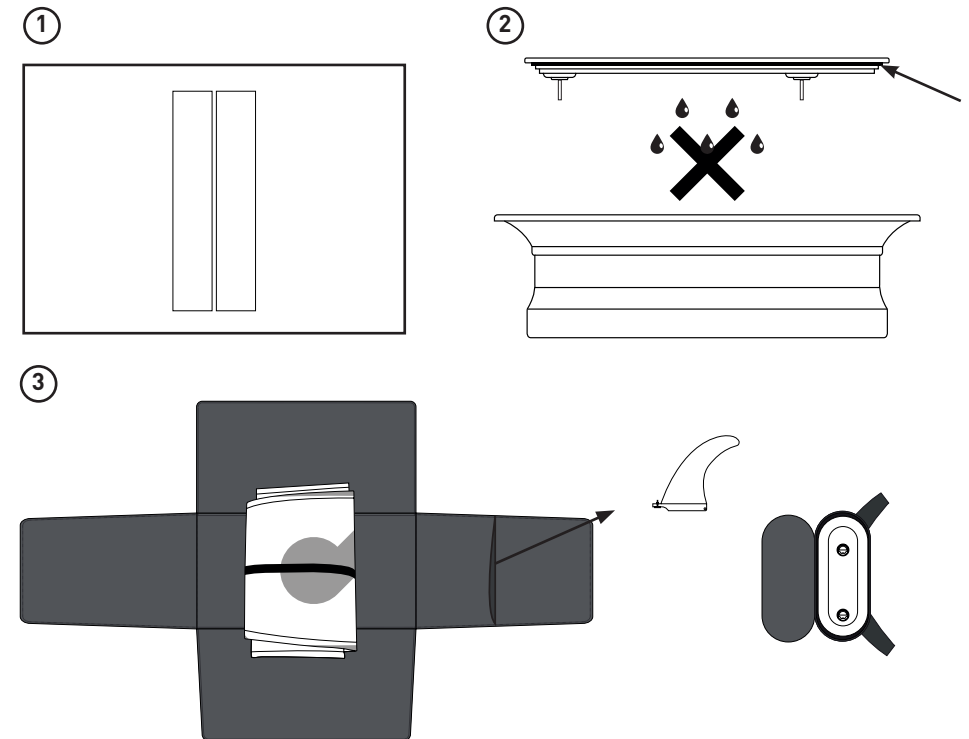
It is extremely important that the SipaDrive cover is placed ONLY on perfectly clean surfaces, as any foreign object (including sand or excessive dust) can damage the watertight seal and allow water to enter the SipaDrive. This includes the plastic around the edge where the seal on the cover rests on the drive itself. (see picture ②)

When transporting the SipaDrive, charger, cables and batteries, make sure you always use the small oval carry bag.

The board bag has a pocket with a velcro strap on the other side of the flap that carries the paddle.

In that flap there is the board's fin.

⚠WARNING DO NOT take the charger with you on the water. Leave the charger safely stored in a dry place, protected from sunlight and away from any source of heat.



READYING THE SUP

Take the bag down to the water's edge, and put the bag's back side down on a soft, dry surface. Open the bag and remove the paddle, and assemble the paddle (see step by step guide).

Unfold the SUP on a soft, flat surface. Place the SipaDrive next to the SUP on a clean and flat surface (right on the board bag is best). Push down the cover next to the round handle, and twist the handle counter-clockwise so that it jumps up. Repeat this with the other handle and remove the SipaDrive's cover. DO NOT be surprised if this takes a little effort (see step by step guide).

INFLATION AND INSERTION OF THE SIPADRIE

Connect the black end of inflation hose to the compressor and the red end of inflation hose to valve on the board at the end of SUP. The inflation hose MUST not be twisted or bent (see step by step guide).

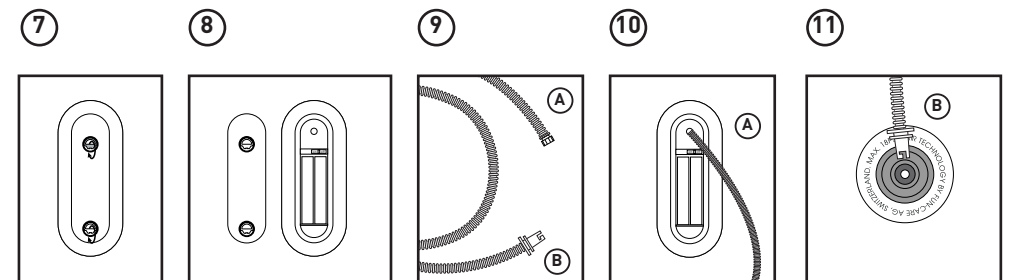
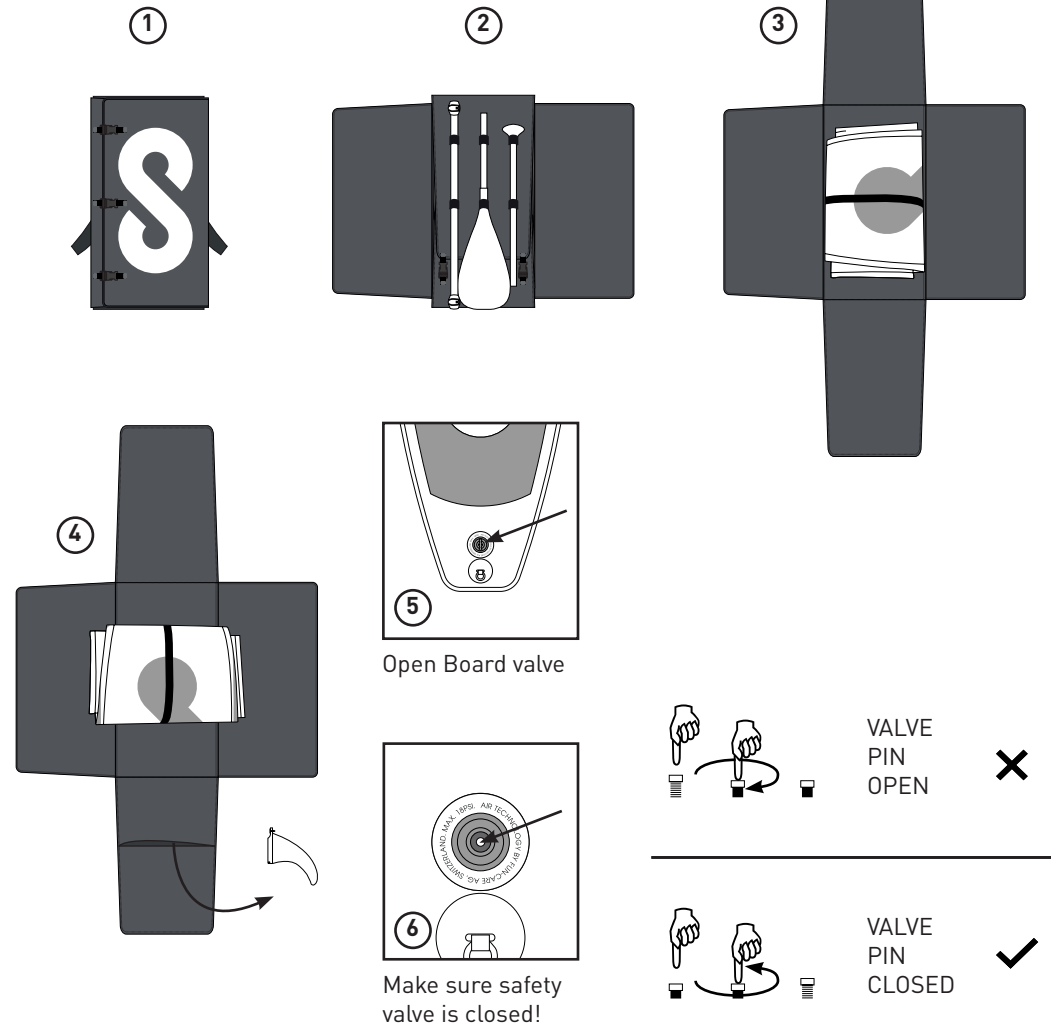
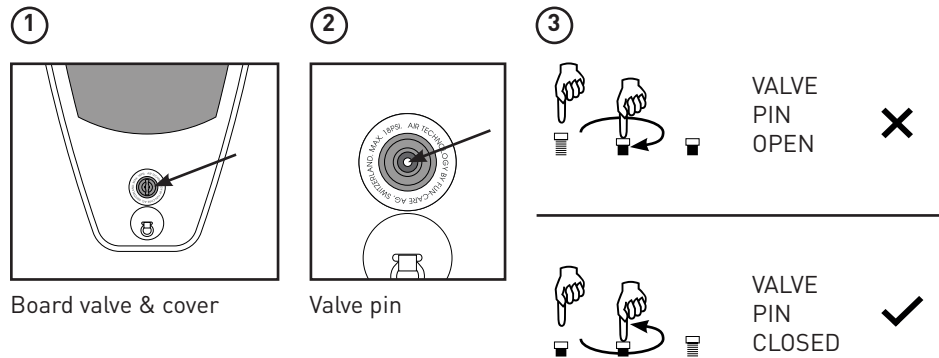
Valve Operation:

The board's inflation valve is located near the back of the board. To open the valve for inflation, make sure that the center valve pin is in the "up" position. If it is in the "down" position, press down on the valve pin and turn it counterclockwise until it pops up.

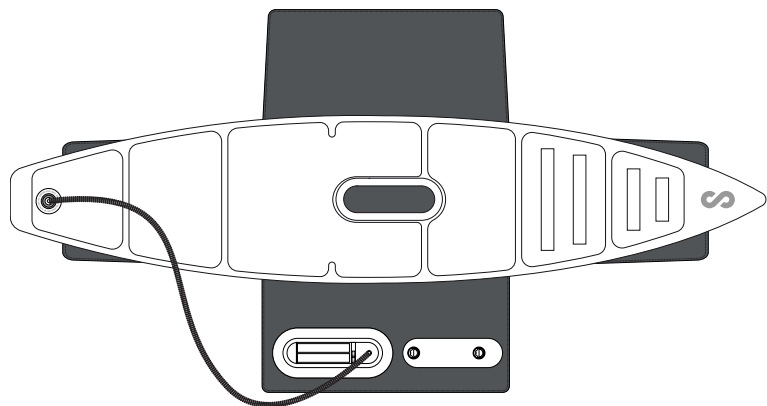
To open the valve for deflation, press down on the valve pin and turn it clockwise so it locks down. Be careful of any sand or debris around the valve area when deflating as small particles could become airborne with the release of air pressure. Clean the area with a clean cloth before opening the valve, if necessary.

⚠CAUTION! Always lock the valve cover over the valve stem when in use. This will prevent accidental air release and entrance of any particles into the air chambers. (see picture ①)

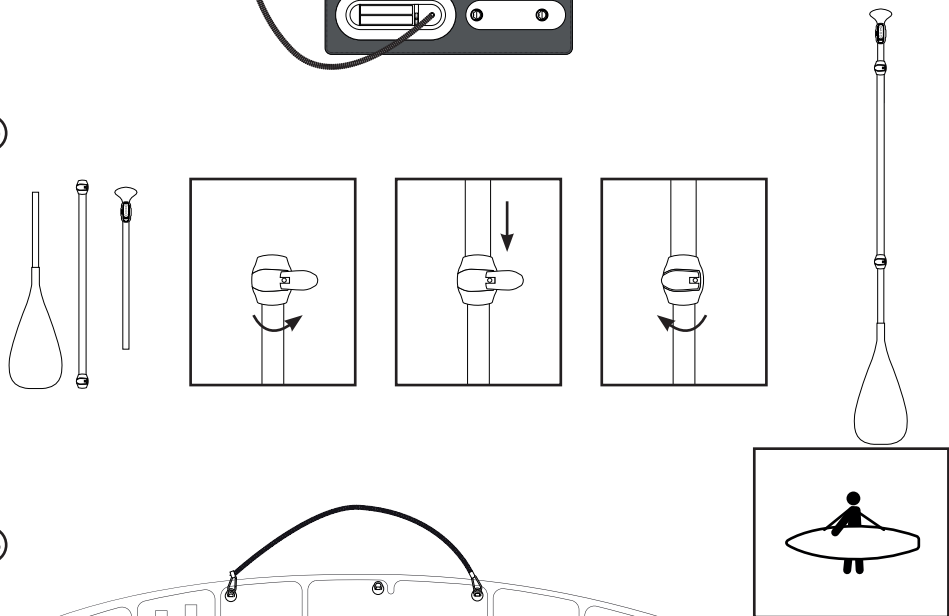
⚠CAUTION! If the valve is in the wrong position (open, see picture ③), you will waste the battery and possibly overheat the compressor. As soon as you detach the inflation hose from the filling hole, all the air pumped in the board will immediately be released, wasting your time, energy, and not to mention nerves. Note that not following the instructions carefully may void the warranty.



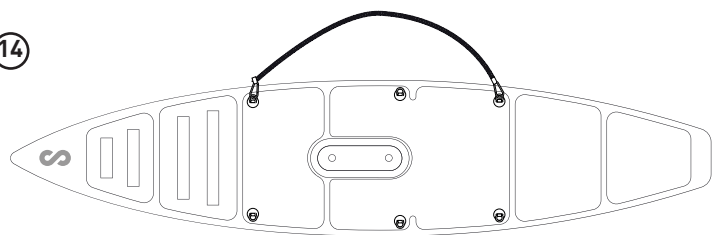
12



13



14



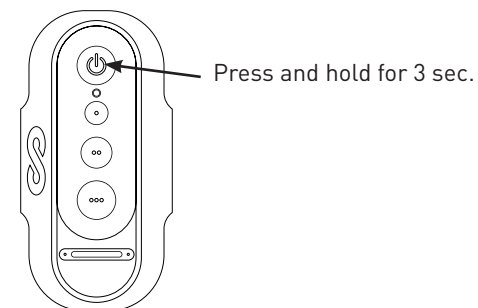
Use the carry strap connected to the D-rings to carry the board.

- 1-3) unfold the bag and remove the 3 piece paddle
- 4) remove fin and inflation hose
- 5) open the board valve
- 6) make sure valve pin is in closed position
- 7) rotate both round handles counter clockwise

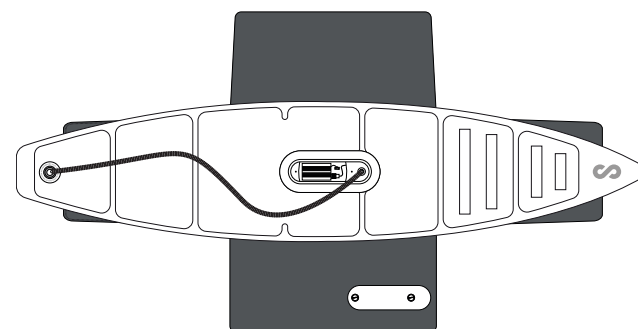
- 8) connect the batteries
- 9-12) attach inflation hose to drive and board correctly
- 13) assemble the paddle
- 14) attach safety & carry leash

Compressor

Turn the power slider in the SipaDrive from OFF to ON. Then press and hold the power button on the remote control for 3 seconds. The first phase lasts a few minutes and will automatically shut itself off at the right pressure, but briefly pressing the on/off button will also deactivate the compressor. (see picture)



At this point place the SipaDrive into the hole in the SipaBoard (see picture), and continue with second phase by again pressing and holding the power button for 3 seconds. This will start the second inflation stage. Again the compressor will automatically stop at the right pressure. When the compressor stops for the second time, the board is pressurised. First unscrew the red end of inflating hose on the board's tail and secondly unscrew the black end of inflating hose on the SipaDrive. Close the SipaDrive cover and secure the handles into place by rotating them clockwise. Pack the rest of your things, stretch out, and get ready to go.

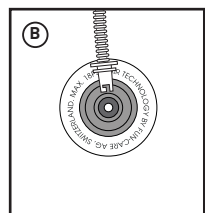


⚠WARNING Make sure the SipaDrive is inserted in the correct direction, otherwise the motor will propel you **BACKWARD** instead of forward. Make absolute sure that the dedicated hole for the SipaDrive is clean, with no foreign objects, sand, or dirt.

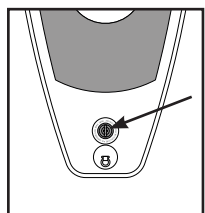
⚠WARNING The inflation hose may become **HOT** during the operation of the compressor. Handle with caution and wait for hose to cool down before touching it. **DANGER:** Not following this instruction may cause severe burns. After the inflation is completed, the hose will cool down on its own in a short period of time.

CAUTION: You **MUST** be present during inflation and monitor the process.

When the SUP is fully inflated after the second phase, the compressor will automatically shut off. At this point detach the inflation hose (B-side) from the valve and fasten the valve cap (see pictures ① & ②). Wait for the inflation hose to cool down, then detach the inflation hose (A-side) from the compressor (see pictures ③ & ④). Wrap up the inflation hose and store it inside the board bag (see picture ⑤). Put the cover on the SipaDrive. As with opening the cover of the SipaDrive, this may take some force. Lean on it with your body weight (see picture ⑦). Attach it by rotating both round handles counter clockwise.



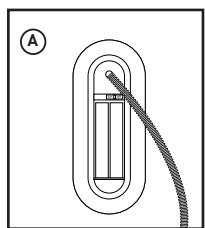
Detach hose (B-side)



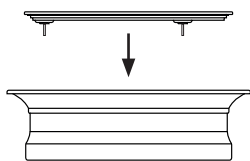
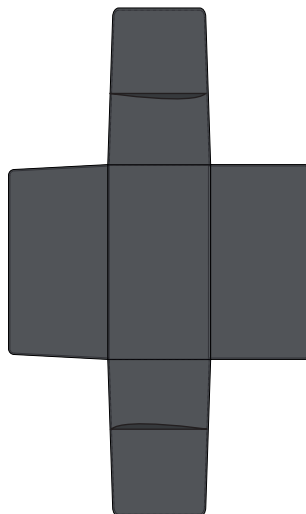
Fasten the valve cap



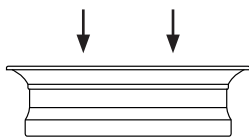
Wait for hose (A-side) to cool down



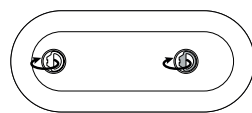
Detach hose (A-side)



Put drive cover on



Push down to close cover



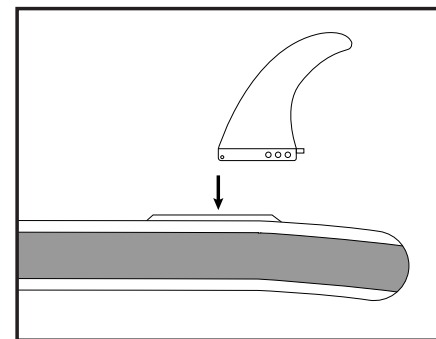
Turn screws finger-tight

⚠WARNING

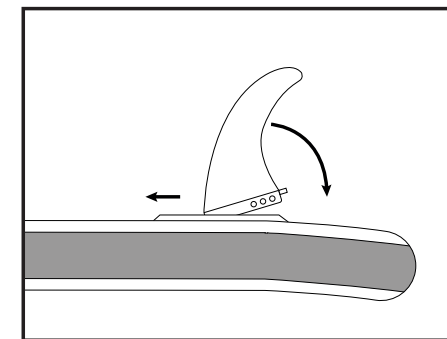
- While the compressor is activated DO NOT put your hand anywhere near the underside of the SipaDrive
- The inflation hose MUST not be twisted or bent.
- Inflation MUST be monitored in all phases, making sure to turn off the on/off button if anything unusual or unexpected happens.

Fin assembly

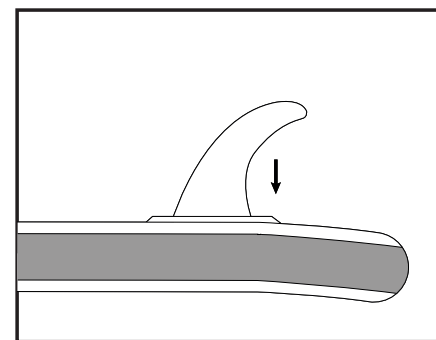
Insert the protrusions in the front of the fin into the chamber in the finbox and slide them in the direction of the board's tip. Push down the back end of the fin downward, applying enough force that the rubber seals click into place. When correctly inserted, none of the rubber seals should be visible.



Insert the fin



Rotate and push forwards



Push down at the back of the fin

⚠WARNING

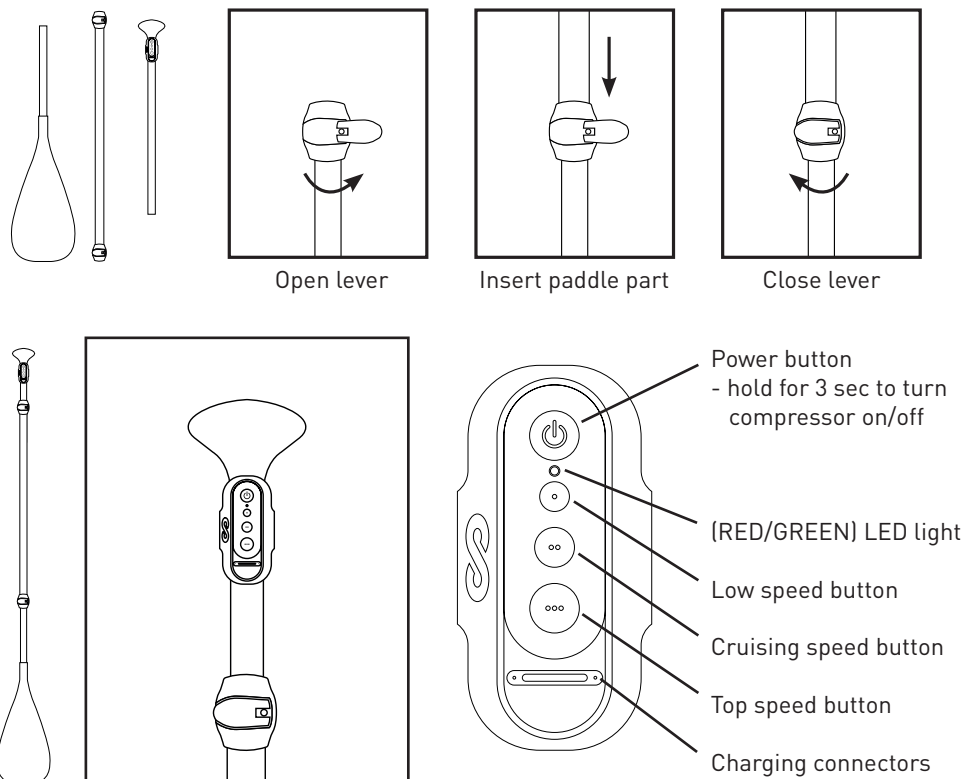
- The seals of the SipaDrive and its cover MUST be completely clean.
- Before putting the SipaDrive in the board's opening, make sure once again that it is facing the right direction.
- Before attaching the cover make sure that nothing is obstructing the placement of the cover. Secure the handles into place without any tools or any other objects.
- There is no visible pressure gauge, as inflation is automatic.

⚠WARNING

The leash MUST be worn at all times! Always use a life-jacket and a leash while paddling. DO NOT carry the SipaBoard in such a way that it puts pressure on the SipaDrive. DO NOT purposefully overturn the SipaBoard while in the water; if it is overturned by accident, immediately turn it back over.

PADDLE AND REMOTE CONTROL

The paddle is collapsible and comes in 3 parts. Put the three parts together and fasten the tightening clips. Many theories exist about the optimal paddle length, so contact a local expert for more information.



WARNING: DO NOT submerge the SipaBoard remote control (which is normally attached onto the top of the paddle) more than necessary. There is no problem if the remote control gets wet or floats on top of the water, but it is not intended to be submerged under the water surface, especially at any significant depth. It is waterproof, but it is not designed to withstand the pressures of deep water. Disregarding this instruction will void the warranty.

The remote control has 4 buttons: one is an on/off button, and 3 speeds to choose from. Slightly pressing the buttons activates and deactivates the SipaDrive, as well as regulates the speed on the water. Holding low speed and pressing at the same time ON/OFF button on remote turn ON or OFF LED LIGHTS.

Maintaining the Remote Control

Clean the remote control after use and dry it out. If used in salt water, make sure you rinse it with fresh water afterwards. Make sure it is completely dry before charging. Also charge the battery before long periods of disuse, to avoid it draining itself. Store the remote control in a dry environment at a temperature between 50 °F/10 °C and 85 °F/30 °C degrees. Charging the remote control is recommended before every session.

For problems with the remote control, contact us at info@sipaboards.com.

START PADDLING

NECESSARY - Start on your knees if there are any hard or sharp objects within 10 feet (3 meters). Also to ensure that the fin does not get damaged, DO NOT launch the SipaBoard in water shallower than your knees.

OPERATING THE SIPADRIVE

⚠WARNING The standard battery configuration (2 x 90 Wh) offers 3 hours and 30 minutes of ride time on Speed 1, 2 hours of ride time on Speed 2 and 1 hour and 10 minutes on Speed 3.

The SipaDrive provides you with 3 speeds of paddle assistance.

First, turn it on by briefly pressing the on/off button. Then choose your ideal speed. You can turn the SipaDrive off by pressing the on/off button once more. The next time you activate the SipaDrive it will be at the same setting as when you turned it off. While the SipaDrive is activated, a green LED will blink once per second. A red LED will start blinking when there is a problem with the RF connection. If the RF connection is interrupted for more than 3 seconds (falls in the water, the remote control and SipaDrive are physically separated), the SipaDrive will shut off automatically.

When approaching the shore again, make sure you turn off the SipaDrive. DO NOT paddle among swimmers. DO NOT paddle into sharp rocks or other objects.

PACKING UP

Take the SipaBoard to a dry and clean surface. It's best that this is in the shade, as prolonged exposure to the sun increases pressure in the SUP and can lead to deformation. The SipaDrive will also stop working when overheated.

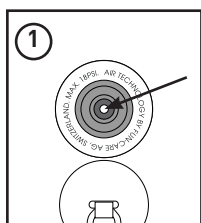
Both the SipaDrive and SipaBoard **MUST** be dry before storage.

Open the valve cap at the back of the SUP and push down the valve pin to let the air out. [see pictures 1&2]

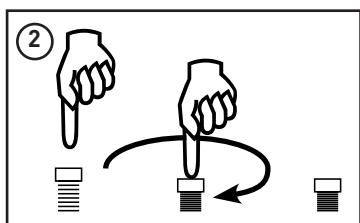
CAUTION! NEVER open the cover if it is moist! Before opening the cover make sure that no water will leak into the SipaDrive (from your clothes or body). When the SipaDrive is dry, open the cover. Put the dried SipaDrive on a flat surface and open the cover. Wipe off any moisture accumulated inside, and move the power slider to OFF, and ONLY then disconnect the battery. You can either transport the battery separately or inside the SipaDrive.

Disassemble the paddle & fold up the SUP. [see picture]

Put everything in the board bag and fold it up [see picture]. Transport the SipaBoard in the dedicated board bag as shown in the picture. The battery can be transported in the SipaDrive housing, as long as the sliding switch is turned OFF. Off you go!



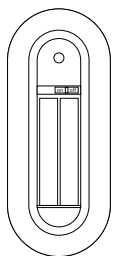
Valve pin



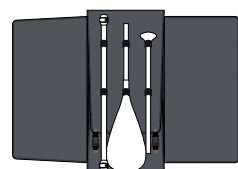
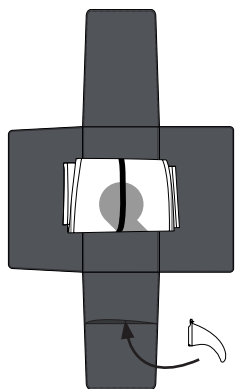
Open valve pin



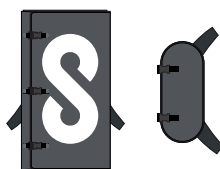
DO NOT OPEN IF WET!



Set the battery mode to OFF position



Put board, paddle and fin in the bag and fold it up



CAUTION! Clean everything **EXCEPT THE INSIDE OF THE SIPADRIE**. If you've been paddling in salt water make sure to rinse the board and the outside of the SipaDrive with fresh water and dry them before transport. Clean the propeller, propeller channel, and protective mesh after every session. NEVER store the SipaBoard wet. NEVER use soap to clean the SipaBoard, just fresh water.

CAUTION! It is perfectly fine to use a SipaBoard until the battery runs out, as it is programmed to leave a certain charge left in the battery. When left alone, however, the battery will continue to slowly discharge itself. It is your responsibility to use the battery properly according with these instructions and to monitor its state and conditions. Charge the battery after every session, especially if you drained it during your paddling. A discharged battery can further drain itself over time past acceptable limits, damaging or even completely ruining the battery. The battery **MUST** also be charged before a long period of non-usage.

Dry the SipaDrive, then clean it with a moist towel, let it sit in a dry spot for a while so that it dries out completely and leave the cover open if SipaDrive is not in use longer period of time.. The same goes for the SipaBoard.

The SipaDrive **MUST** always be completely dry before opening its cover.

CAUTION! If the SipaBoard suddenly loses speed for no apparent reason, it is likely because some plant or other object has clogged up the mesh protecting the intake to the propeller shaft. Simply turn off the SipaDrive and reach a safe area where you can comfortably remove the objects obstructing the intake hole.

WARNING Avoid areas with visible marine vegetation or other objects floating on the water as well as waters that may be otherwise polluted. Such conditions may cause injuries to you and damage to the product. ONLY use this product in waters where you can swim safely.

BATTERY CHARGE LEVEL INDICATORS

WARNING Please note that the battery charge level indicator is ONLY intended to provide the user with a general understanding of remaining battery charge available. Users **MUST ONLY** use the SipaBoard to cover distances that the user is comfortable reaching, and returning from, under paddle power ONLY, in the event of battery depletion or any other failure of the system.

TEST THE SIPADRIE'S BATTERY

With the SipaDrive off, hold button 3 and click the on/off button LED: a sequence of 5 flashes indicates the SipaDrive's battery's charge level

5 x green = 100%	2 x green + 3 x red =40%
4 x green + 1 x red =80%	4 x green + 1 x red =20%
3 x green + 2 x red =60%	5 x red = 0%

TEST THE REMOTE CONTROL'S BATTERY

With the SipaDrive off, hold button 2 and click the on/off button

LED: a sequence of 5 flashes indicates the SipaDrive's battery's charge level

5 x green = 100%

4 x green + 1 x red =80%

3 x green + 2 x red =60%

2 x green + 3 x red =40%

4 x green + 1 x red =20%

5 x red = 0%

⚠CAUTION! DO NOT submerge or leave the remote control underwater for extended (unnecessary) periods of time. Water contact in normal use conditions will not cause any problems to the remote.

MAINTAINING THE SIPADRIE BATTERY AND CONNECTORS

The SipaDrive's battery has a built-in control to protect it from harmful states during use and during charging. It is your responsibility to use the battery in good faith and monitor its state.

Charge the battery after every session, especially if you drained it during your paddling. A discharged battery can further drain itself over time past acceptable limits, damaging or even completely ruining the battery.

⚠WARNING

- Only use the battery included or the spare battery from SipaBoards. If the battery has any sign of damage or malfunction, DO NOT use it. If you need to dispose of a broken or unusable battery, consult and follow the local applicable laws and regulations regarding the disposal or recycling of Li-Ion batteries.
- DO NOT open the battery's casing.
- During transport or storage NEVER let the battery be exposed to temperatures lower than freezing or higher than 115° F (50° C).
- Store the battery in a dry environment, away from any combustible or otherwise volatile substances.
- NEVER drop the battery. Always protect the battery from physical and water damage. Damage to the battery can result in overheating, melting, and fire, and it can be dangerous to your safety.

⚠WARNING In the unlikely event that the battery catches fire, try to protect yourself and others from injury and extinguish the fire with a fire extinguisher or with sand. DO NOT try to extinguish a battery fire with water. Water is not appropriate to extinguish lithium fires.

TROUBLESHOOTING

- If no LED lights are pulsing on the SipaDrive when you attach the batteries, move the power slider to ON. If no lights appear the batteries are completely drained. Recharge and try again. Should the problem persist, there might be a problem with the SipaDrive. In this case contact us at info@sipaboards.com.

There are 2 LEDs on the SipaDrive:

- GREEN and RED error LED separated from the rest

These can ONLY be seen when the SipaDrive's cover is open, mostly as indicators of states before your session and during inflation, as well as to assist you in the event of errors or malfunctions.

When the battery is connected, LEDs show:

- the status of the RF connection
- the compressor's state
- error codes

CHARGE LEVEL: is encoded in a combo of green and red LED on Remote. See "TEST Drive battery",

Remote and SipaDrive pairing procedure:

Insert the batteries into the SipaDrive, after checking that the power slider is switched to OFF. Press and hold all three speed buttons simultaneously and without releasing them, press the power button. Both green and red lights will turn on, which signifies that the remote is in pairing mode for 10 seconds.

Now flip the power slider on the SipaDrive from OFF to ON. Your SipaDrive will always go into stand-by mode when the power is switched on, giving a remote in pairing mode a possibility to connect. With the remote in pairing and SipaDrive turned ON, the devices will automatically connect. If the process is successful, a green light will turn on the remote for two seconds. If the pairing process isn't successful, a red LED light will turn on and the process should be repeated.

After each pairing all stored information is lost, as each pair of remote and motor represents a unique set of connected devices. Two remotes cannot be paired with the same drive, as well as a single remote cannot operate two drives.

LED status on SipaDrive	GREEN	RED
OFF	off	off
ON STAND BY	blinking slow	off
ERROR EMPTY BATTERY	off	three short blinks in cycles
ERROR MOTOR	off	on
DRIVE MODE	on	off
COMPRESSOR STAGE 1	blinking fast	off
COMPRESSOR - INSERT MOTOR	on	blinking fast
COMPRESSOR STAGE 2	blinking fast	off
LED status on REMOTE	GREEN	RED
DRIVE MODE, COMPRESSOR	on	off
RADIO FREQUENCY LOST (shows only once)	off	on
PAIRING	on	on
SUCCESSFUL END OF PAIRING (2sec)	on	off
UNSUCCESSFUL END OF PAIRING (2sec)	off	on
MOTOR IN OPERATION	on	off
REMOTE BATTERY EMPTY (shows only once)	off	three short blinks
CONNECTED TO CHARGER - CHARGING IN PROGRESS	off	on
CONNECTED TO CHARGER - CHARGING COMPLETE	on	off

Temperature errors reset themselves when the temperature subsides. An overloaded motor is reset - after the error is addressed (such as cleaning the propeller) - by turning the SipaDrive off and on again.

⚠WARNING ONLY unplug the battery when on land in a dry environment. If the system error remains, it MUST be sent to be serviced. Contact us at info@sipaboards.com.

REPAIR KIT

All SipaBoards come with a repair kit in the event of small holes or punctures in the SUP itself. Instructions for repair are included in the kit itself. If you have a hole larger than that which can be repaired with the included kit, it shall be considered that you were improperly using the SipaBoard and the warranty will not cover a repair. Depending on the size of the puncture, it might still be repairable. If you are unsure as to whether a puncture is repairable, contact SipaBoards and we will advise you about the appropriate steps.

REPAIRS

Hole in the SUP:

- Find the leak.
- Deflate the SUP
- Find or cut a suitable patch, preferably of round or oval shape.
- Thoroughly clean the area on the SUP, with rubbing alcohol if possible. The area MUST be dry.
- Put the patch on the SUP and mark on the patch size and shape needed.
- Evenly apply sealant to the patch's outline on the SUP and on the back of the patch.
- Wait 5 to 10 minutes for the sealant to become tacky to the touch.
- Lightly press the patch on the area to be repaired, with the sealant sides touching. Make sure there are no bubbles under the patch. Press with more force and flatten it out strongly, using the back of a spoon or another hard, smooth object.
- Leave at least 24 hours to dry thoroughly

WARRANTY

SipaBoards offers a 24 month warranty on all inflatable boards and a 24 month warranty on the SipaDrive electric motor. The owner can extend the board's warranty from 24 to 36 months, by registering the board on Sipaboards' website. To register your board follow the steps provided on the following page.

The SipaBoards warranty will begin to take effect once you register the board online and confirm that you are familiar with these instructions. You **MUST** register your product online within 30 days of your product delivery date in order to benefit from the warranty and/or warranty extension.

NO OTHER INFORMATION, ADVICE, OR COMMUNICATION OF ANY NATURE BY OR FROM SIPABOARDS, OR ITS REPRESENTATIVES, EMPLOYEES, AGENTS, DISTRIBUTOR, OR SUPPLIERS WILL CREATE A WARRANTY OR IN ANY WAY MODIFY THE SCOPE OF THIS LIMITED WARRANTY IN ANY WAY.

Warranty exclusions:

- The warranty is valid **ONLY** when the product is used for normal recreational activities.
- The warranty is voided whenever the instructions of this manual are not properly followed by the owner/user, including but not limited to those instructions that include explicit reference to the warranty being void if disregarded.
- This warranty does not cover damage deriving from normal wear and tear, nor damage from negligent or reckless use or maintenance.
- This warranty is void if any unauthorized repair, change or modification has been made to any part of the product.
- Shipping costs for product, or product parts, to be repaired or replaced under warranty are the sole responsibility of the customer.

RELEASE OF LIABILITY and CLAIM WAIVER

SIPABOARDS MAKES NO WARRANTIES, EXPRESSED OR IMPLIED, INCLUDING THOSE OF MERCHANTABILITY OR FITNESS FOR A PARTICULAR PURPOSE, THAT THE PRODUCT WILL MEET CUSTOMERS' NEEDS, THAT THE OPERATION OF THE PRODUCT WILL BE ERROR-FREE, OR THAT ALL ERRORS WILL BE CORRECTED, ALL OF WHICH ARE EXPRESSLY DISCLAIMED.

In jurisdictions where limitation or waiver of implied warranties are not permitted by law, the previous disclaimer shall operate to the maximum extent permitted by law.

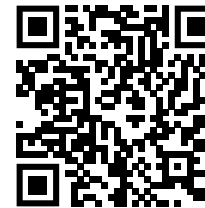
In consideration of your use of this product, you hereby agree, to the fullest extent permitted by law, to waive any present and future claim against SipaBoards, or any of its agents, resulting from the use of this product and any of its components. You also agree, to the fullest extent permitted by law, to release SipaBoards, or any of its agents, from any and all liability for any loss, damage, injury, or expense that you or any user of this product may suffer, or that your next of kin may suffer, due to any cause whatsoever including negligence or breach of contract on the part of SipaBoards, or any of its agents, in the design or manufacture of this product.

BOARD REGISTRATION



Scan the QR code

BOARD UNBOXING



Scan the QR code

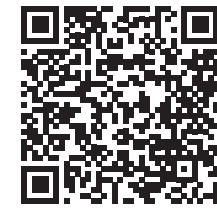
SIPABOARDS TIPS&TRICKS



Scan the QR code

YOUTUBE CHANNEL

»HOW TO SERIES«



Scan the QR code

DOWNLOAD THE IPHONE APP



Scan the QR code

DOWNLOAD THE ANDROID APP



Scan the QR code

SERIAL NUMBER AND REGISTRATION

Both your SipaBoard and SipaDrive have serial numbers recorded on them. We strongly recommend recording these in case your board is ever lost or stolen, as well as for warranty purposes.

BOARD REGISTRATION INSTRUCTIONS

Enter the website <https://sipaboards.com/esup-registration/> on your browser or use your phone's QR code reader and scan the code below to register your SipaBoard and Drive online. Fill in the necessary spaces and submit your registration for review to our support team. Once the registration is successfully processed, you will receive a warranty approval to your provided e-mail address.

***Registration within 30 days of product delivery is necessary to activate the warranty, and is also extremely useful in helping us and authorities find a lost or stolen board, and will also help us in providing you with additional product information - including discounts and other special deals - in the future.